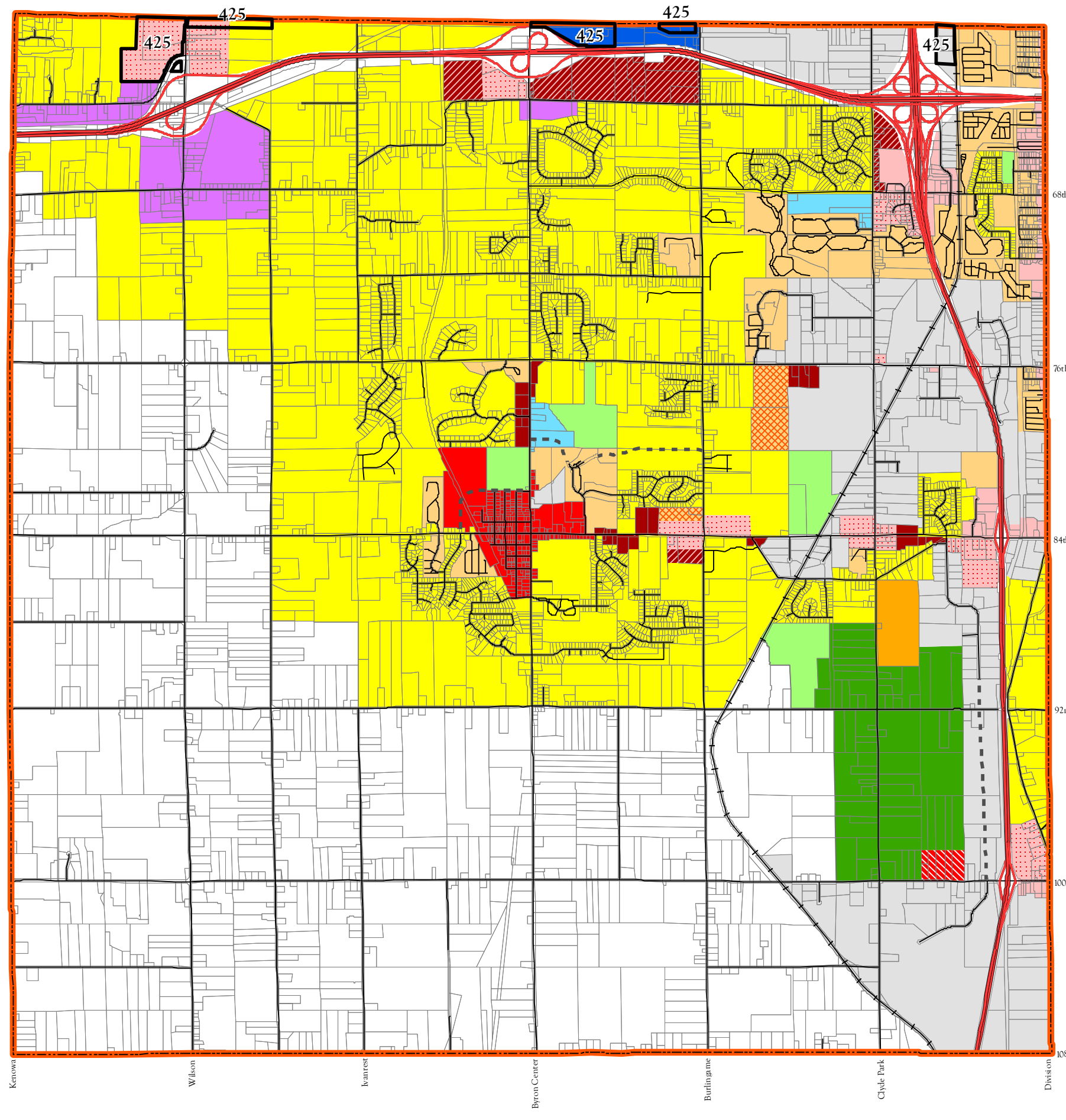


Byron Township

Kent County, Michigan

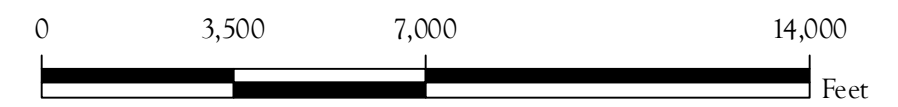
Future Land Use

Adopted: December 26, 2007

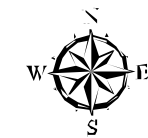


- Future Roads
- Future Land Use**
- R-AG, Rural Agricultural
- SR, Suburban Residential
- MFR, Multi-Family Residential
- C, Commercial
- VC, Village Center
- OS, Office Service
- IND, Industrial / Research
- RC, Rural Conservation
- PR, Public Recreation
- MFR PUD, Multi-Family Residential PUD
- C PUD, Commercial PUD
- MFR/OS PUD, Multi-Family Residential / Office Service PUD
- IND/OS PUD, Industrial / Office Service PUD
- OS PUD, Office Service PUD
- OS/C PUD, Office Service / Commercial PUD
- SR/MFR PUD, Suburban / Multi-Family Residential PUD
- MU PUD, Mixed Use PUD

1 inch equals 3,500 feet



Williams & Works
engineers . planners . surveyors
616.224.1500 phone • 616.224.1501 facsimile
549 Ottawa Avenue NW • Grand Rapids, MI 49503



© 2001 REGIS All Rights Reserved
This map does not represent a legal document. It is intended to serve as an aid in graphic representation only. Information shown on this map is not warranted for accuracy and should be verified through other means. Any duplication is restricted under copyright laws and the Enhanced Access to Public Records Act, PA 462 of 1996, as amended.